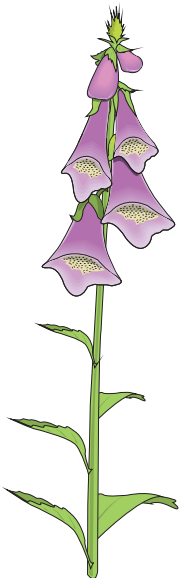
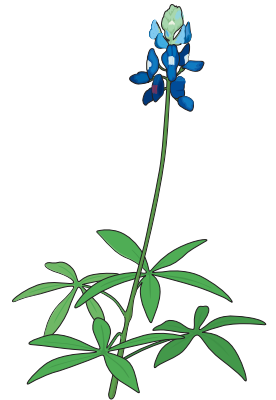
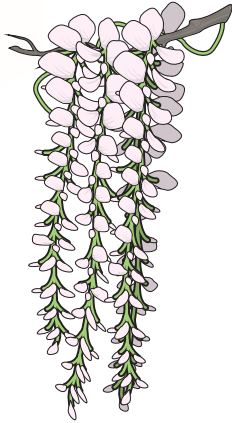


# TONIFARM

## WHEN BIOTHERAPY IS APPLIED TO BREEDING



## SOLUTIONS BASED ON PLANT EXTRACTS

*Tonifarm est une marque d'Alphatech - Tonifarm, a brand of Alphatech*

**ALPHATECH** Sarl - Le Croissant - 22170 LANRODEC (France)

Tél. : (+33) 296 326 990 - Fax : (+33) 296 326 999

Web : [www.alphatech-france.eu](http://www.alphatech-france.eu) - E-mail : [alphatech-france@orange.fr](mailto:alphatech-france@orange.fr)

RCS Saint-Brieuc : B432833622 - Capital : 62500 € - APE : 1091Z - TVA : FR96432833622





# TONIFARM POSTPARTUM

COMPLEMENTARY FEED SUPPLEMENT  
FOR ALL BREEDED ANIMALS

**Buckets :**

2,5 kg

5 kg

**Bags :**

10 kg

## Characteristics :

Entire plants mixture to distribute to dairy cows, manners, sows, ewes and goats just after parturition.

Just after the parturation moment, **TONIFARM POSTPARTUM** contributes to :

- Improve genitalia hygiene.
- Stimulate afterbirth elimination.
- Accelerate uterus cleaning.
- Boost lactation.
- Contribute to a better future fertility.

## Nutritional objectives :

**TONIFARM POSTPARTUM** contributes to reduce reactions linked to Post Partum stress.

### European habits in pigs breeding :

- PLANATE : injection administrated to stimulate the farrowing realized the day before the foreseen date of the farrowing.
- "CERGOTONINE" : injection administrated at the end of the farrowing to accelerate the end of the farrowing and to clean the reproduction organs.

At the beginning, **TONIFARM POSTPARTUM** has been created as alternative solution to products like "CERGOTONINE". Now, some of our customers use also **TONIFARM POSTPARTUM** the day before the foreseen date of the farrowing as alternative solution to PLANATE injections with good results. Observed consequences : sows more quiet (less stress), reduction of newborn piglet mortality.

## Composition per kg :

Entire plants mixture : 550 000 mg  
(Angelica, Dill, Burdock, Nettle, Aloe)  
Flour by-product : 450 000 mg

## Directions for use :

**TONIFARM POSTPARTUM** must be mixed with the feed intake at a rate of :

- Dairy cow : 50 g morning and evening.
- Mane : 50 g morning and evening.
- Sow : 20 g morning and evening.
- Ewe, goat : 20 g morning and evening.

Administer for 2 days running just after the birth. If necessary, renew for during 4 to 5 days running.



# TONIFARM

ALTERNATIVE SOLUTIONS TO ACCOMPANY  
BREEDERS ONLY THANKS TO THE PROPERTIES  
OF SOME PLANT EXTRACTS

**Containers :**

- 1 litre
- 2 litres
- 5 litres
- 10 litres
- 20 litres

**Nutritional goals of TONIFARM formulations :**

To reinforce the immune defence system thanks to plant extracts.

	Preventive	Curative			Hepato-protective
		Coughs Sneezes Cold snaps	Flus symptoms	Viral diseases	
<p><b>PIGS :</b></p> <ul style="list-style-type: none"> <li>→ TONIFARM pig P-R</li> <li>→ TONIFARM S-A-G</li> <li>→ TONIFARM pig S-R</li> </ul>	X	X	X		
<p><b>RUMINANTS :</b></p> <ul style="list-style-type: none"> <li>→ TONIFARM ruminant F-R</li> <li>→ TONIFARM ruminant P-R</li> <li>→ TONIFARM sheep P-R</li> <li>→ TONIFARM S-A-G</li> </ul>	X X	X X	X	X X	X
<p><b>POULTRY :</b></p> <ul style="list-style-type: none"> <li>→ TONIFARM poultry CI</li> <li>→ TONIFARM poultry ES</li> <li>→ TONIFARM poultry H</li> <li>→ TONIFARM poultry P</li> <li>→ TONIFARM poultry R-P</li> <li>→ TONIFARM S-A-G</li> </ul>	X	X	X X	X X	X X
<ul style="list-style-type: none"> <li>→ TONIFARM poultry AC</li> <li>→ TONIFARM poultry SV</li> </ul>	<p>To accompany anti-coccidiosis treatments To reduce stress just after vaccination</p>				



# TONIFARM S-A-G

COMPLEMENTARY FEED SUPPLEMENT  
FOR ALL BREEDED ANIMALS

**Containers :**  
From 1 litre  
to 20 litres

## Characteristics :

**TONIFARM S-A-G** is a solution intended to manage some breeding problems :

- Variations in temperature.
- Change from dry and cold weather to cold and humid weather.
- Viral diseases.
- To improve also milk production of dairy cows just after the calving.

And also for pigs :

- In post-weaning and fattening : flu symptoms.
- Boars : flu symptoms, sudden rise of temperature at the time of the farrowing. To reduce reactions linked to stress before and after some vaccinations.
- Fattening : "ventral" coughs at about 120 days.

## Nutritional objectives :

**TONIFARM S-A-G** is a complementary feed supplement recommended at the time of the critical growth phases and to accompany the management of flu symptoms. It contributes to reduce reactions linked to stress.

## Composition per litre :

Magnesium (chloride) :	12 500 mg
Vitamin C :	12 000 mg
Plants extracts :	Grindelia, Origeno, Echinacea, Ginseng

## Directions for use :

### Pigs :

**TONIFARM S-A-G** can be distributed via dosing pumps or liquid feed machines. It can be distributed without waiting period but must not be distributed more than 7 days running.

Piglets : 1 ml 3 times / day for 5 days running.

Pigs and boars : 2 ml 3 times per day for 5 days running.

### Ruminants :

**TONIFARM S-A-G** can be distributed via drinking water or directly in the feed intake for 3 to 5 days running, twice or 3 times per day :

**Calf** : 5ml / day.

**Young bovines** : 10 ml / day.

**Adult bovines** : 20 ml / day.

**Sheep and goats** : 5 ml / day.

### Poultry :

**TONIFARM S-A-G** can be distributed via dosing pumps or directly in drinking water tanks.

Recommended dosage : 0.3 litre to 0.5 litre per 1000 litres of drunk water per day for 4 to 5 days running.

### Horses :

**TONIFARM S-A-G** can be distributed directly in the feed intake for 3 to 5 days running, twice or 3 times per day :

**Foals and ponys** : 10 ml / day.

**Horses** : 20 ml / day.

Do not store **TONIFARM S-A-G** at more than 30°C and near electric motors.

This formulation is registered in France as product accepted in organic poultry Production. Regulation (CE) N°824/2007 and (CE) N°889/2008.  
Registration made by ECOCERT S.A.S. (France)





# TONIFARM pig P-R

COMPLEMENTARY FEED SUPPLEMENT  
FOR PIGLETS , PIGS AND BOARS

**Containers :**  
From 1 litre  
to 20 litres

## Properties :

TONIFARM pig P-R is a preventive formula designed to manage some problems found in pig breeding :

- In post-weaning : recurring viral diseases, the fall of the organism's defense mechanisms, MAP at 50 days old or at the end of the post-weaning / beginning of fattening.
- Fattening : recurring viral diseases, the fall of the organism's defense mechanisms, MAP at 21 days old after fattening admittance.
- Boars : the fall of the organism's defense mechanisms, a more important newborn mortality, puny piglets.

## Nutritional objectives :

TONIFARM pig P-R is a complementary feed supplement and an anti-stress to use to improve organism's defence mechanisms and reduce viral diseases.

## Composition per litre :

Magnesium (chloride) :	12 500 mg
Vitamin C :	12 000 mg
Plant extracts :	Eupatorium Perfolatum, Eucalyptus Globulus, Viola Odorata, Myrtus communis, Hyssopus.

## Directions for use :

TONIFARM pig P-R can be administered via dosing pumps (drinking water) or via humid feed machines without waiting period. However, it must not be administered more than 7 days running.

**Piglets and pigs** : 1 ml per day for 5 days running. Then, 1 ml per day, 2 days per week.

**Boars** : 5 ml per day for 5 days running at the time of their entrance and exit of farrowing area. Then, 5 ml for 2 days running per week.

Do not store TONIFARM pig P-R at more than 30°C and near electric motors.

TONIFARM pig P-R must not be administered more than 7 days running.

# TONIFARM pig S-R



COMPLEMENTARY FEED SUPPLEMENT  
FOR PIGLETS AND PIGS

**Containers :**  
From 1 litre  
to 20 litres

## Characteristics :

TONIFARM pig S-R has been designed to manage some problems found in pig breeding :

- In post-weaning : piglets sneezes. Stress linked to environment (variation in temperature, animals motions, ...).
- In fattening : loss of appetite at 65 – 70 kg after repetitive chronic coughs (every 3 weeks).

## Nutritional objectives :

TONIFARM pig S-R is a complementary feed supplement recommended to reduce reactions linked to stress and to increase appetite in post-weaning and fattening.

## Composition per litre :

Magnesium (chloride) :	12 500 mg
Vitamin C :	12 000 mg
Plant extracts :	Polygala senega, Eucalyptus globulus, Thymus Serpyllum L, Drosera, Cetraria islandica

## Directions for use :

TONIFARM pig S-R can be administered via dosing pumps (drinking water) or via humid feed machines without waiting period. However, it must not be administered more than 7 days running.

Piglets : 2 ml / day for 5 days running.

Pigs : 4 ml / day for 5 days running.

Do not store TONIFARM pig S-R at more than 30°C and near electric motors.

TONIFARM pig S-R must not be administered more than 7 days running.



# TONIFARM ruminant F-R

LIQUID COMPLEMENTARY FEED  
SUPPLEMENT FOR BOVINES

**Containers :**

From 1 litre  
to 20 litres

## Characteristics :

TONIFARM ruminant F-R is an hepatoprotective formula to face up to the different critical periods of bovine breeding :

- At the time of feed transitions.
- When zoo-technical performances decrease after digestive diseases linked to new feed or feed too rich in fat.
- After antibiotic treatments.

TONIFARM ruminant F-R improves liver and digestive functions.

## Nutritional objectives :

TONIFARM ruminant F-R is a complementary feed supplement to use as preventive solution at the time of critical breeding moments.

## Composition per litre :

Magnesium (chloride) : 12 500 mg  
Citrus and Orange extracts  
Plant extracts : Taraxacum, Solidago, Caduus Marianus, Pilosella,  
Foenum Graecum.

## Directions for use :

TONIFARM ruminant F-R can be administered via drinking water or directly mixed in the feed intake at a rate of :

**Young bovines** : 10 ml / day.

**Adult bovines** : 20 ml / day.

By treatments of 5 days running every month.

Do not store TONIFARM ruminant F-R at more than 30°C and near electric motors.

TONIFARM ruminant F-R must not be administered more than 7 days running.



# TONIFARM ruminant P-R

LIQUID COMPLEMENTARY FEED  
SUPPLEMENT FOR BOVINES, SHEEP AND GOATS

**Containers :**  
From 1 litre  
to 20 litres

## Characteristics :

TONIFARM ruminant P-R is an anti-stress formulation to improve animals resistance at the time of :

- Variations in temperature in Autumn and Spring (cold and humidity).
- Environment changes (new animals in herd).
- Animals rounding-up (entrance in cowsheds).
- Cold snaps.

## Nutritional objectives :

To reduce reactions linked to stress.

## Composition per litre :

Magnesium (chloride) :	12 500 mg
Vitamin C :	12 000 mg
Plant extracts :	Alfalfa, Marubium, Oregano, Phytolacca decandra, Sambucus nigra L.

## Directions for use :

TONIFARM ruminant P-R can be administered via drinking water or directly mixed in the feed intake for 5 days running the first week ; then, 2 days running per week at a rate of :

**Young bovines** : 5 ml / day.

**Adult bovines** : 10 ml / day.

**Sheep and goats** : 5 ml / day.

Do not store TONIFARM ruminant P-R at more than 30°C and near electric motors.

TONIFARM ruminant P-R must not be administered more than 7 days running.



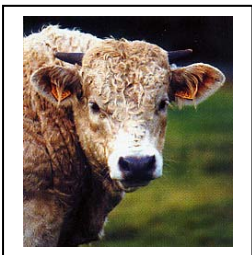
# TONIFARM RUMINANT P-R Trials results

In EEC, flu affects every year,  
more than a ruminants breeding on two.

There are 2 kinds of standard flus :

- Respiratory flu (coughs),
- Intestinal flu (diarrhoeas).

FLU is a viral and contagious disease which is characterized by a sudden loss of tonus, a lack of appetite, some fever and some weight loss.



### FLU : a disease with symptoms and varied risks factors :

- **Viruses with respiratory chief characteristic** result in dry coughs ; then, loose coughs, mucous rejection and more and more difficult inspiration.
- **Viruses with digestive chief characteristic** breed important and very liquid diarrhoeas with some clots.



## TRIALS RESULTS TONIFARM Ruminants P-R

- ➔ Tests realized on 33 young bovines (breed : Limousin) from the same farm.
- ➔ Animals were not sorted out before their entrance in each stall. Average weigh at the stall entrance : 331 kg / head.

	Concrete floor	Wheat straw bedding
<u>Tonifarm</u>	Stall n° 1 8 heads	Stall n° 3 9 heads
<u>No Tonifarm</u>	Stall n° 2 8 heads	Stall n° 4 8 heads

Average weight after  
TONIFARM administration :

**Stall 1 + 3 : 427 kg**

Stall 2 + 4 : 386 kg

**TONIFARM Ruminant P-R boostes immune defence system  
and in this way, reduces viral diseases consequences.**

**Price of TONIFARM Ruminant P-R treatment : 12 euros / animal in average.**

### Composition of TONIFARM Ruminant P-R :

Magnesium (chloride) : 12 500 mg

Vitamin C : 12 000 mg

Plant extracts : QSP 1 litre

- (Taraxacum, Solidago, Caduus Marianus,
- Pilosella, Foenum Graecum)

### Some figures about flu consequences on dairy cows it is not well managed :

- Loss of 5 litres / cow / day for 30 days running.
- Weight loss of 50 kg.
- Upset fertility.



**Bag :**  
20 kg

# TONIFARM sheep PR

## COMPLEMENTARY FEED SUPPLEMENT FOR SHEEP AND GOATS

### Characteristics :

TONIFARM sheep PR is a powdered formula to top-dress on the feed intake for lambs, and adult animals.

### Nutritional objectives :

Reduction of the reactions linked to stress.

### Composition au kg :

Feed grade clay  
Plant extracts : Marubium, Oreganum, Phytolacca decandra, Sambuccus nigra L.

### Analytical components :

Calcium : Inférieur to 0.1 %  
Phosphorus : Inférieur to 0.1 %  
Sodium : inférieur to 0.1 %

### Directions for use:

TONIFARM sheep PR must be mixed in the feed intake at the rate of:

- ⇒ First week: during 5 running days, 10 g / animal / day.
- ⇒ Then: 2 days running / week, 10 g / animal / day.

Do not store TONIFARM sheep PR at more than 30°C and near electric motors.



# TONIFARM poultry CI

LIQUID COMPLEMENTARY FEED  
SUPPLEMENT FOR POULTRY

**Containers :**

From 1 litre  
to 20 litres

## Characteristics :

TONIFARM poultry CI is directed to face up to the different critical phases of poultry breeding:

- Periods of stress.
- Viral diseases due to temperature variations.
- Change from a cold and dry weather to a cold and damp weather.

## Nutritional objectives :

Reduction of the reactions linked to stress

TONIFARM poultry CI is a complementary feed supplement to use also during the critical phases of growth, following respiratory disease complications.

## Composition per litre :

Magnesium (chloride) :	12 500 mg
Vitamin C:	12 000 mg
Organic Silicon	
Aromatic and pre-prandial Plant extracts:	Cochlearia, Inula helenium L., Quillaya Saponaria, Agrimonia eupatoria L., Rosmarinus officinalis L.

## Directions for use:

TONIFARM poultry CI can be administered via dosing pumps or directly mixed in drinking water tanks:

**Advised dosage:** 0.3 to 0.5 litre of TONIFARM poultry CI for 1000 litres of water drunk per day, during 3 to 5 days running.

Do not store TONIFARM poultry CI at more than 30°C and near electric motors.

TONIFARM poultry CI must not be administered more than 7 days running.

This formulation is registered in France as product accepted in organic poultry Production. Regulation (CE) N°824/2007 and (CE) N°889/2008.  
Registration made by ECOCERT S.A.S. (France)





# TONIFARM poultry CI

## TRIALS RESULTS ON INFECTIOUS BRONCHITIS

### What is an Infectious Bronchitis ?

Infectious Bronchitis is a viral disease.

The causes are numerous and can be very different from a disease to another :

- An environment highly concentrated in birds or other bred animals,
- Manures spreading in fields,
- Sudden variations in temperatures, etc...

That is the reason why it is always very difficult to know the virus which affects the birds from an Infectious Bronchitis to another one. It can be totally different.

For this reason, we used to speaking of “**wild virus**” when birds are confronted with an Infectious Bronchitis.

### Consequences of a Infectious Bronchitis on birds :

An infectious Bronchitis is characterized by an appetite loss with a sudden laying decrease or a sudden increase of **bad quality eggs** like :

- Brown eggs which are suddenly white,
- Too thin shell egg, etc...

### Why ?

An infectious Bronchitis increases and deforms all the respiratory system.

Layers have the particularity to have in their morphology, genitals close to the respiratory system. So, when the respiratory system is deformed by an Infectious Bronchitis, **genitals are also deformed** (layers have ovarian pains) and that is the reason why as long as a layer will be victim of an Infectious Bronchitis, it will produce bad quality eggs.

### How have we created TONIFARM CI concept ?

All these considerations have induced us to think :

- There is no active matter which can treat every species of virus. So, the only possible solution is to **boost the immune system** which will be able itself to fight each virus.
- More quickly the respiratory system will regain its normal size, more quickly the eggs production will find again its quality.
- Quality eggs production is closely linked to appetite. So, it is important that birds recover as soon as possible their normal **appetite**.

### Actual solutions :

For many years, the only solution to reduce the consequences of Infectious Bronchitis was to add Oxytetracycline in the feed.

However, **Oxytetracycline does not treat the viral disease, it only boosts appetite** to try to reduce the consequences of such a disease on shell eggs quality.

### What we suggest :

**TONIFARM CI** boosts the **immune system**,

**TONIFARM ES** is an hepatoprotective solution only based on plant extracts to boost appetite with special plant extracts to increase at the same time, phosphorus and calcium fixation (→ shell egg quality) **whatever the feed quality and the appetite level**.

## Our trials results :

### Example of problematic we have during one of our trials :

House of 74 000 layers, located in an environment highly concentrated in poultry. 1 km around, there are 4 houses : 2 broiler turkey houses, 1 layer house in semi open air, 1 standard layer house.

This breeding house of 74 000 layers still faces regular IB flows on all the birds batches.

As early as the entry in cages on the 18th week, until the 27th breeding week, the feed intake is supplemented with Oxytetracycline 1 week out of 2. The breeder is convinced to face chronic IB with a lot of eggs out of shape.

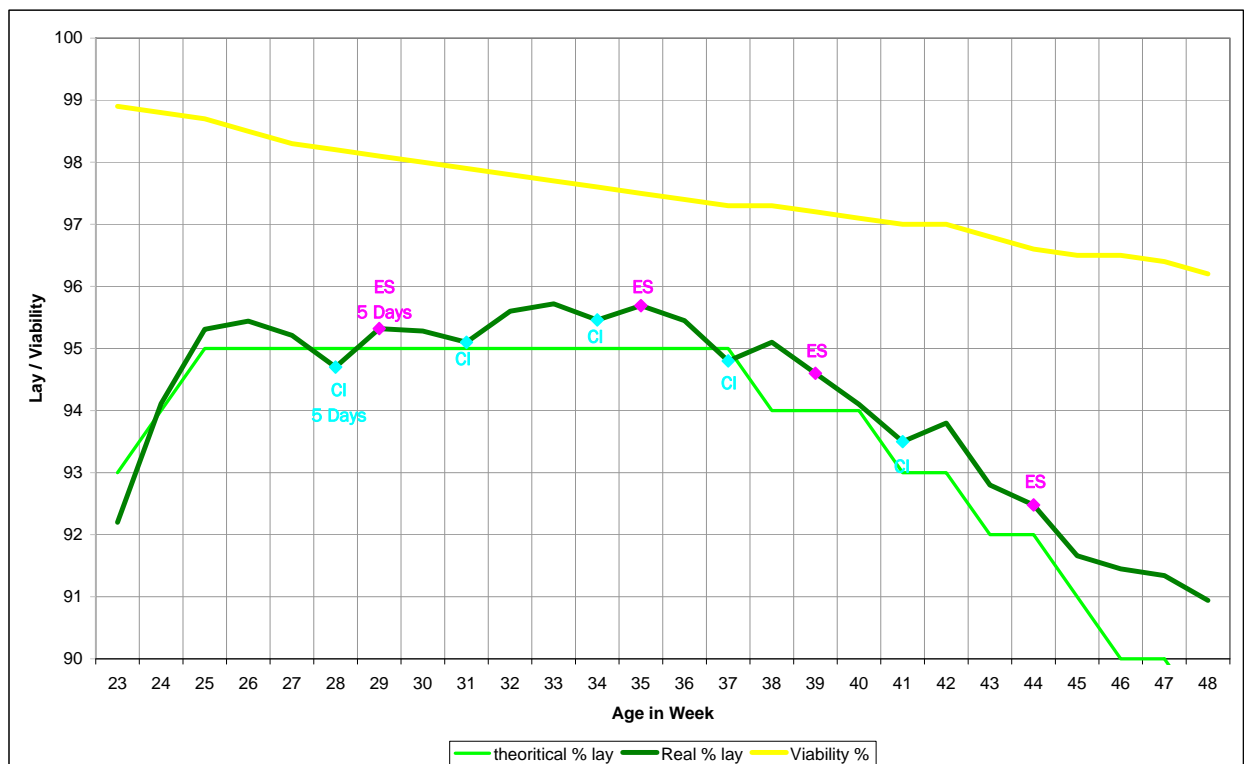
As early as the 28th week, he implements the ALPHATECH protocol TONIFARM CI + TONIFARM Coquilles. The eggs quality is improving immediately.

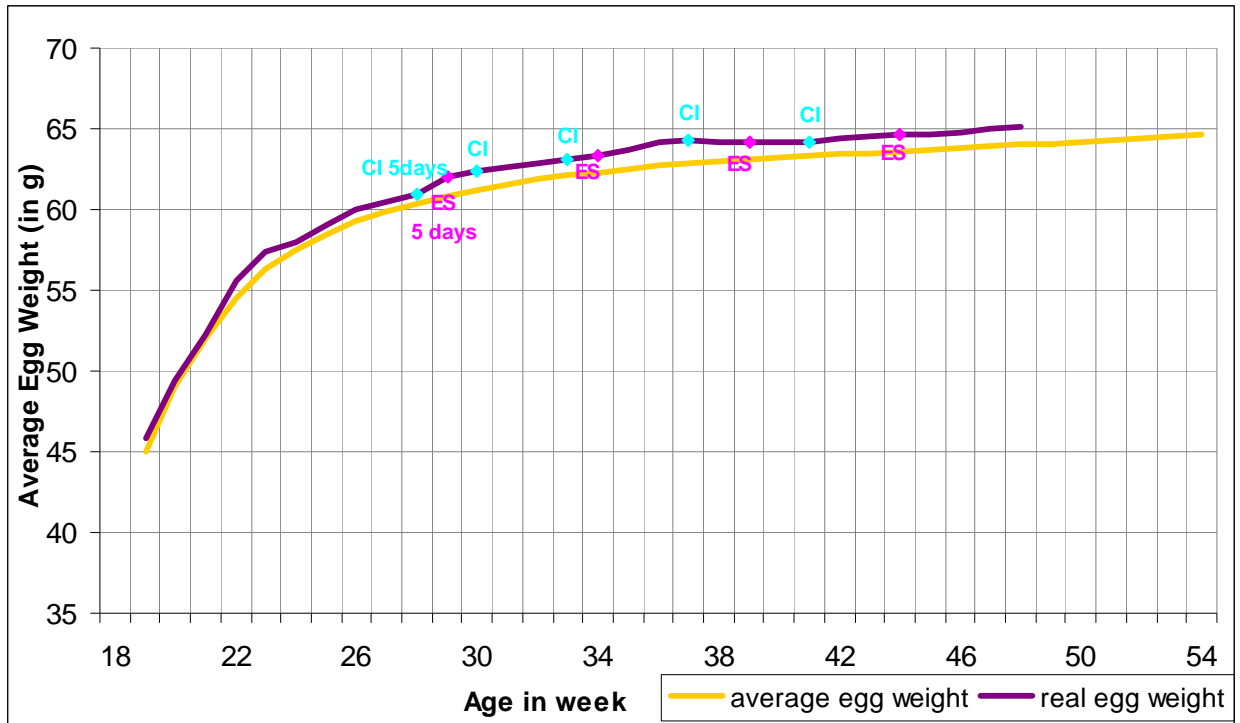
As soon as the symptoms appear again, he uses TONIFARM CI for 5 days running, followed by TONIFARM ES.

TONIFARM ES is administrated for 6 days running per month, instead of a hepatoprotective as it could be done before in the feed intake.

### Results at 48 weeks old:

- Laying percentage : 90,94 %
- Egg weight: 65,09 g (norm = 64 g)





- Conclusions :**
- **TONIFARM CI** contributes efficiently to reduce the consequences of Infectious Bronchitis.
  - **TONIFARM CI** must be administered when the symptoms are visible.
  - It is important to associate its administration with **TONIFARM ES** to avoid sudden decrease of eggs weigh.

**Very important :** **TONIFARM CI** and **TONIFARM ES** must not be administrated at the same time (formulae must not mixed together).

These results are just an example, but a perfect example which sums up the numerous tests and trials we have made in France. In 17 months, we have made tests :

- On more than 1 millions of layers,
- On all the most known layers strains : **ISA BROWN – LOHMANN – HY-LINE.**



# TONIFARM poultry ES

LIQUID COMPLEMENTARY FEED  
SUPPLEMENT FOR LAYERS

**Containers :**

From 1 litre  
to 20 litres

## Characteristics :

**TONIFARM poultry ES** is an hepatoprotective formula adapted to face up the different critical phases of poultry breeding:

- When shells are fragile.
- When layers become to be old and have shell eggs quality problems (from the 55<sup>th</sup> week in average).
- When zootechnical performances decrease due to digestive overcharges.
- After antibiotics treatments.

## Nutritional objectives :

**TONIFARM poultry ES** is a complementary feed supplement to use as a preventive solution to the critical breeding phases. This solution will allow the layer to better assimilate the feed phosphorus and calcium in order to have a better shell quality.

## Composition per litre :

Magnesium (chloride) : 12 500 mg  
Citrus and Orange Extracts  
Organic Silicium  
Plant extracts : Taraxacum, Solidago, Caduus Marianus, Pilosella, Foenum graecum.

## Directions for use:

**TONIFARM poultry ES** can be administered via dosing pumps or directly mixed in drinking water tanks :

- From the 40<sup>th</sup> week, 1/3 litre for 1000 litres of water drunk per day, during 5 days running.
- Renew this operation 1 week out of 2, particularly when shells are fragile.

Do not store **TONIFARM poultry ES** at more than 30°C and near electric motors.

**TONIFARM poultry ES** must not be administered more than 7 days running.

This formulation is registered in France as product accepted in organic poultry Production. Regulation (CE) N°824/2007 and (CE) N°889/2008.  
Registration made by ECOCERT S.A.S. (France)





# TONIFARM poultry H

LIQUID COMPLEMENTARY FEED  
SUPPLEMENT FOR LAYERS – BROILERS  
TURKEY HENS – DUCKS – GUINEA FOWLS

**Containers :**  
From 1 litre  
to 20 litres

## Characteristics :

TONIFARM poultry H is an hepatoprotective formula to face up to the different critical phases of poultry breeding :

- At the time of feed transitions.
- When zootechnical performances decrease after digestive diseases linked to new feed or feed too rich in fat.
- After antibiotic treatments.

TONIFARM poultry H improves liver and digestive functions.

## Nutritional objectives :

TONIFARM poultry H is a complementary feed supplement to use as preventive solution at the time of critical breeding moments.

## Composition per litre :

Magnesium (chloride) : 12 500 mg  
Citrus and Orange extracts  
Organic Silicium  
Plant extracts : Taraxacum, Solidago, Caduus marianus, Pilosella,  
Foenum graecum.

## Directions for use :

TONIFARM poultry H can be administered via dosing pumps or directly mixed in drinking water tanks :

**Chicks stress at their entrance :** 1/3 of litre of TONIFARM poultry H for 500 litres of drunk water per day the 1<sup>st</sup> and 2<sup>nd</sup> day.

**Then, from the 1<sup>st</sup> week :** 1/3 of litre of TONIFARM poultry H 1 day on 2 or 3 days for 1000 litres of drunk water per day.

**The day before and the day after vaccination days.**

Do not store TONIFARM poultry H at more than 30°C and near electric motors.

TONIFARM poultry H must not be administered more than 7 days running.

This formulation is registered in France as product accepted in organic poultry Production. Regulation (CE) N°824/2007 and (CE) N°889/2008.  
Registration made by ECOCERT S.A.S. (France)





# TONIFARM poultry P

LIQUID COMPLEMENTARY FEED  
SUPPLEMENT FOR POULTRY

**Containers :**

From 1 litre  
to 20 litres

## Characteristics :

**TONIFARM Poultry P** is a formula to face up to the different critical phases of poultry breeding :

- Stress at the time of separations and rounding-ups.
- Aggressiveness, adaptability problems.
- Feed transitions.
- More generally, to reduce most of the reactions linked to stress.

## Nutritional objectives :

**TONIFARM poultry P** is a complementary feed supplement to reduce reactions linked to stress and to reduce losses of appetite at the time of feed transitions.

It contributes also to improve immune defences.

## Composition per litre :

Magnesium (chloride) :	12 500 mg
Vitamin C :	12 000 mg
Organic Silicium	
Plant extracts :	Citrus limonum L, Echinacea, Eucalyptus globulus, Marubium, Gentiana lutea.

## Directions for use :

**TONIFARM poultry P** can be administered via dosing pumps or directly mixed in drinking water tanks :

**Chicks stress at their entrance :** 1/3 of litre of **TONIFARM poultry P** for 500 litres of drunk water per day the 1<sup>st</sup> and 2<sup>nd</sup> day.

**Then, from the 1<sup>st</sup> week :** 1/3 of litre of **TONIFARM poultry P** 1 day on 2 or 3 days for 1000 litres of drunk water per day.

**The day before and the day after vaccination days.**

Do not store **TONIFARM poultry P** at more than 30°C and near electric motors.

**TONIFARM poultry P** must not be administered more than 7 days running.

This formulation is registered in France as product accepted in organic poultry Production. Regulation (CE) N°824/2007 and (CE) N°889/2008.  
Registration made by ECOCERT S.A.S. (France)





# TONIFARM Poultry P

## TRIALS RESULTS

### What are TONIFARM formulae ?

TONIFARM is our registered brand name where we have gathered together all our creations in matter of complementary feed supplements **solutions based on plant extracts**.

Each of TONIFARM formulae has a unique composition and has been designed to bring an alternative solution to recurrent breeding problems.

All TONIFARM formulae are our own creations in close collaboration with our Veterinarian who has more than 30 years of experience in this field (Ex Vet Professor in Paris).

All TONIFARM formulae are totally manufactured in our factory without subcontracting.

### What is the goal of TONIFARM Poultry P ?

TONIFARM Poultry P has not been created to solve particular breeding diseases. It has been designed to **boost birds immune defense system** during all the breeding. Its action will be therefore visible through :

- A reduction of antibiotics administration ;
- A feed consumption rate improvement ;
- A more important body weight at slaughtering time.

### What are the conducted tests ?

**Goal of the first tests :** to estimate the capacity of TONIFARM Poultry P to reduce some antibiotics administration.

The first trials were conducted in an important local pigeons breeding located in Brittany.

These birds being particularly sensitive, most of the breeders treat them weekly with antibiotics like Amoxicilline and Spiramycine.

**Goal of the second tests :** to prove that birds have a better feed consumption rate when they have a better immune defense system.

**Goal to the third tests :** to confirm that birds with a better immune defense system and therefore a more linear growth, have a heavier body weight at slaughtering time.

### Our trials results :

#### **First trials : is TONIFARM Poultry P a solution to reduce antibiotics administration ?**

A pigeons breeding located in Brittany.

8000 birds (→ 4000 couples).

Usual breeding conditions : pigeons being particularly sensitive to disease, the breeder treats them by safety weekly with Amoxicilline and Spiramycine.

Date of the trials : From March 2004 to July 2006.

Tests were conducted step by step :

Parameters of the tests :	Results :
<p><u>First period (2 months) :</u>            3000 couples treated weekly with antibiotics.            1000 couples treated 1 week / 2 with antibiotics and the other one with TONIFARM Poultry P.</p>	No detected difference (mortality, feed consumption, fertility) between the two herds.
<p><u>Second period (3 months) :</u>            2000 couples treated weekly with antibiotics.            2000 couples treated 1 week / 4 with antibiotics and the 3 other ones with TONIFARM Poultry P.</p>	No detected difference (mortality, feed consumption, fertility) between the two herds.
<p><u>Third period (6 months) :</u>            1000 couples treated weekly with antibiotics.            3000 couples treated 1 week / 8 with antibiotics and the 7 other ones with TONIFARM Poultry P.</p>	No detected difference (mortality, feed consumption, fertility) between the two herds.
<p><u>Fourth period (6 months) :</u>            1000 couples treated weekly with antibiotics.            3000 couples treated 1 week / 12 with antibiotics and the 11 other ones with TONIFARM Poultry P.</p>	No detected difference (mortality, feed consumption, fertility) between the two herds.
<p><u>Fifth period (9 months) :</u>            1000 couples treated weekly with antibiotics.            3000 couples treated 1 week / 16 with antibiotics and the 15 other ones with TONIFARM Poultry P.</p>	Loss of fertility and superior average mortality in couples treated with TONIFARM Poultry P

**Conclusions of the tests :** TONIFARM Poultry P is a solution to reduce Amoxicilline and Spiramycine administration.

A second test was conducted successfully later in the same breeding (4000 couples treated 1 week / 12 with antibiotics and the 11 other ones with TONIFARM Poultry P) to confirm the first trials results.

**Now, in this breeding place TONIFARM Poultry P is administered systematically every week and birds are treated only 4 times / year (every quarter) with Amoxicilline and Spiramycine.**



**Second trials : is TONIFARM Poultry P improves feed consumption ratio ?**

A layers breeding located in Brittany.

20000 birds (ISA BROWN strain) separated in two herds :

- 10000 birds have TONIFARM Poultry P in their drinking water.

- 10000 birds have only their standard treatments via drinking water.

The feed consumption is checked and calculated when birds are 20 weeks old (just before laying period starts).

Date of the trials : 2007 and 2008.

Average feed consumption / bird <b>with</b> TONIFARM Poultry P via drinking water :	Average feed consumption / bird <b>without</b> TONIFARM Poultry P via drinking water :
6.3 kg of feed / bird.	6.8 kg of feed / bird.
Average bird weight difference between the two herds : not significant <b>→ Global difference of feed consumption between the two herds at the 20<sup>th</sup> week : 5MT</b>	

Conclusions of the tests : TONIFARM Poultry P is a solution to improve feed consumption ratio.

These tests were conducted a second time in the same breeding place and have confirmed the above results.

**Third trials : body weight at slaughtering time with TONIFARM Poultry P**

A layers breeding located in Brittany.

60000 birds (ISA BROWN strain) separated in two herds :

- 30000 birds have TONIFARM Poultry P in their drinking water.

- 30000 birds have only their standard treatments via drinking water.

Date of the trials : 2007.

	Layers <b>with</b> TONIFARM Poultry P via drinking water :	Layers <b>without</b> TONIFARM Poultry P via drinking water :
<u>Weight at the 19<sup>th</sup> week :</u>	1.6 kg	1.6 kg
<u>Weight at slaughtering time :</u> (week n° 72)	2.03 kg	1.9 kg
<u>Quantity of eggs / bird during laying period :</u>	20.631 kg	19.147 kg
<b>Global difference of eggs when TONIFARM Poultry P is administered via drinking water in a breeding of 60 000 birds :</b> <b>60000 x (20.631 kg – 19.147 kg) x 98% (mortality 2%) = 87260 kg</b>		

Conclusions of the tests : TONIFARM Poultry P contributes to maintain feed consumption and to improve egg quantity per layer.



# TONIFARM poultry RP

LIQUID COMPLEMENTARY FEED SUPPLEMENT  
FOR TURKEY HENS AND GUINEA FOWLS

**Containers :**

From 1 litre  
to 20 litres

## Characteristics :

**TONIFARM poultry R-P** has been created for high growth animals :

- It contributes to a better mineralization of high potential animals.
- It acts as an anti-stress at the time of feed transitions, separations and after antibiotic treatments.

## Nutritional objectives :

**TONIFARM poultry R-P** is a complementary feed supplement intended to reduce the reactions linked to stress.

## Composition per litre :

Magnesium (chloride) : 12 500 mg  
Organic Silicium  
Plant extracts : Arenaria rubra, Solidago, Equisetum arvense L,  
Salix alba, Harpagophytum

## Directions for use :

**TONIFARM poultry R-P** can be administered via dosing pumps or directly mixed in drinking water tanks :

Administer **TONIFARM poultry R-P** from 21<sup>st</sup> day old, 2 days running every 15 days at the rate of 0.3 litre to 0.5 litre for 1000 litres of drunk water per day or five days running for males and females before their departure.

Stop 2 days and distribute 5 days running for males and 2 days every week if needed.

Do not store **TONIFARM poultry R-P** at more than 30°C and near electric motors.

**TONIFARM poultry R-P** must not be administered more than 7 days running.



# TONIFARM poultry AC

LIQUID COMPLEMENTARY FEED  
SUPPLEMENT FOR POULTRY

**Containers :**

From 1 litre  
to 20 litres

## Characteristics :

**TONIFARM Poultry AC** is a formula based on active plant extracts. It has been designed to assist management of coccidiosis risks during breeding period.

## Nutritional objectives :

The active plant extracts (synergy) incorporated in **TONIFARM poultry AC** improve immune defense system.

**TONIFARM poultry AC** acts notably on mucous membranes quality and digestive tract walls.

## Composition per litre :

Magnesium (chloride) : 12 500 mg

Vitamin C : 12 000 mg

Organic Silicium

Plant extracts : Lithrum Salicana, Thymus Vulgaris, Stanacetum Vulgaris, Artemisia, Arctostaphylos Uva-Ursi, Filipendula Ulmaria.

## Directions for use :

**TONIFARM poultry AC** can be administered via dosing pumps or directly mixed in drinking water tanks.

Administration at the rate of 0.5 litre / 1000 litres of drinking water.

Do not store **TONIFARM poultry AC** at more than 30°C and near electric motors.

**TONIFARM poultry AC** must not be administered more than 7 days running.

This formulation is registered in France as product accepted in organic poultry Production. Regulation (CE) N°824/2007 and (CE) N°889/2008.  
Registration made by ECOCERT S.A.S. (France)





# TONIFARM poultry SV

LIQUID COMPLEMENTARY FEED  
SUPPLEMENTS FOR POULTRY

**Containers :**  
From 1 litre  
to 20 litres

## Characteristics :

TONIFARM poultry SV is directed to face up to the different critical phases of poultry breeding notably after vaccinations.

TONIFARM poultry SV contributes to boost appetite, vitality and to reduce hyperthermia risks.

## Nutritional objectives :

TONIFARM poultry SV is a complementary feed supplement to use during critical growth phases.

## Composition per litre :

Magnesium (chloride) : 12 500 mg

Citrus and Orange Extracts

Aromatic and pre-prandial plant extracts: Taraxacum, Solidago, Sylibum marianum, Pilosella, Foenum graecum.

## Directions for use:

TONIFARM poultry SV can be administered via dosing pumps or directly mixed in drinking water tanks:

**Advised dosage:** 0.5 litre of TONIFARM poultry SV for 1000 litres of water drunk per day, 1 day before vaccination. Then 3 to 4 days running after vaccination.

Do not store TONIFARM poultry SV at more than 30°C and near electric motors.

TONIFARM poultry SV must not be administered more than 7 days running.

This formulation is registered in France as product accepted in organic poultry Production. Regulation (CE) N°824/2007 and (CE) N°889/2008.  
Registration made by ECOCERT S.A.S. (France)

